



6/20/2024

## **VISITING TRIP TO KEPL ON KOLOBANGARA ISLAND TO NEGOTIATE SINU POITETE PLOT OF LAND REPORT**



Prepared by Edward Biku, Samuel Pitakaka &  
Cypriano Nuake  
SOLOMON ISLANDS NATIONAL UNIVERSITY



---

## 1. EXECUTIVE SUMMARY

### *1.1. Brief Overview of the Trip's Purpose*

On June 11, 2024, from 3:00 to 4:00 pm, representatives from Solomon Islands National University (SINU) and Kolombangara Forest Products Limited (KFPL) met at the KFPL Administration Office to discuss several key issues. Attendees included Edward Biku, Samuel Pitakak Vazu, Cypriano Nuake, Peter Mahoa from SINU, and Edwin Schramm, Tim Bula, and Greg Napthalae from KFPL. Dr. Vaeno Vigulu, Dean of FAFF (SINU), sent his apologies for not attending.

The main agenda items were the subdivision and extension of SINU Poitete Campus land boundary, a proposed land trade-off with the Ministry of Agriculture and Livestock at Ringgi Cove, and the approval of student practicum opportunities at KFPL facilities. It was resolved that Edwin Schramm would seek KFPL Board approval for both the subdivision and extension of the Poitete Campus land boundary, with SINU providing necessary development plans. For the land trade-off, SINU would engage with relevant government bodies.

The practicum opportunities for SINU students were acknowledged as ongoing and aligned with the current Memorandum of Understanding (MOU) between SINU and KFPL. Additional resolutions included constructing a signboard at Ringgi Cove which was approved and verifying land documents to facilitate the subdivision process. Lastly, SINU would liaise with the Ministry of Forestry and Research regarding potential acquisition of adjacent forestry land at Poitete.

The meeting concluded at 4:00 pm with clear action items and responsibilities outlined to advance the discussed initiatives.

### *1.2. Key Findings and Outcomes*

#### *1.2.1. Poitete Campus Land Ownership:*

- The Poitete Campus current land boundary contains 1.161 hectares located in Fix Term Estate (FTE) 081-003-106 registered in the name of Kolombangara Forest Products Limited (KFPL).

- The Perpetual Estate (PE) is not determine in the meeting and to be further verified with the Commissioner of Land of whether the PE is with the Commissioner of Land or otherwise has been given to the Kolobangara Land Trust Foundation (KLTF).
- The KFPL board of management will meet, verified its land documents and determine the subdivision request of 1.161 hectares in consultation with the Commissioner of Land and pursuant to the requirement provided by the Land and Title Act.
- KFPL take note of SINU offer and request of 10 hectares expansion of 1.161 hectares subject to the condition for SINU to disclose its development plans over Poitete Campus to the company board of management over the requested expansion of 10 hectares to justify the offer and request to be made in consultation with the Commissioner of Land pursuant to the requirement provided by the Land and Title Act.

#### 1.2.2. Ringi Cove Agriculture Land:

- The Agriculture land is own by the Solomon Islands Government and any consultation of trade-off will be made with the relevant Government ministry and Western Provincial Government.

#### 1.2.3. SINU Sign Board at Ringgi Cove Wharf Area:

- Construction of SINU sign board at Ringii Cove wharve is approved and SINU can proceed preparation of sign board to be installed in Ringgi Cove.

### *1.3.Summary of Recommendations*

KFPL General Manager, Edwin Schramm, will present the subdivision request to the KFPL Board of Management and SINU will submit a detailed development plan for the Poitete Campus within the next month. To avoid approval delays, it is crucial to maintain regular communication with the Board and provide comprehensive documentation. Similarly, for the 10-hectare land extension request, Schramm will seek Board approval while SINU prepares and submits a detailed development plan. Engaging legal experts and conducting thorough verification will ensure compliance with regulations and mitigate any issues.

SINU will initiate discussions within the next 2-3 months with the Ministry of Agriculture, Livestock, and the Western Provincial Government regarding the potential land trade-off at Ringgi Cove. Transparent and collaborative discussions with stakeholders are essential to address any resistance and highlight the benefits of the trade-off. For the ongoing student practicum opportunities, SINU and KFPL will regularly review the current

Memorandum of Understanding (MOU) to identify areas for expansion and ensure alignment with the curriculum. Developing contingency plans will help manage any operational disruptions.

In the next 6 months, SINU will plan and construct a signboard at Ringgi Cove, adhering to the specifications agreed upon with KFPL. Prioritizing actions and seeking additional support, if necessary, will address potential resource constraints.

Additionally, SINU and KFPL will jointly examine and verify the documents related to Fixed Term Estate (FTE) and Perpetual Estate (PE) for the Poitete Campus subdivision within the next 2-3 months. Engaging legal experts for thorough verification will mitigate any documentation issues.

Lastly, SINU will engage with the Ministry of Forestry and Research over the next 6 months to explore the possibility of acquiring adjacent forestry land. Ensuring compliance with forestry and land acquisition laws by consulting with legal experts will mitigate regulatory compliance risks.



---

## 2. INTRODUCTION

### *2.1. Background and Context*

The Poitete campus covers an area of approximately 1.161 hectares and is located in Fix Term Estate (FTE) 081-003-106 registered in the name of Kolobangara Forest Products Limited, one of SINU's campuses situated in the Western Province at Kolobangara Islands.

The Poitete Campus was established in 1987 to train forestry rangers in supervising and managing the country's forestry sector. The campus provides students with practical experience and fieldwork opportunities aligned with the forestry curriculum. Commencing its training in 1988, the campus's buildings were constructed using timber materials following the design of the Honiara Housing Authority. Funding for the campus construction was provided by the government and SICHE, resulting in the campus housing classrooms, staff houses, a kitchen, dining hall, a male and female dormitory, an ablution block, a garage/storage shop and a library. These houses have been deteriorated and should be demolished with new standard buildings.

Due to threats during the ethnic tension period, the campus suspended its training, relocating its certificate program to the Kukum Campus until 2018, when a review reduced the certificate program to one year. Additionally, a two-year diploma program in forestry science was introduced in 2018.

Some times in 2020 and 2021 several visits and reports were made by the Office of the Vice Chancellor and staff of Faculty of Agriculture, Forestry and Fisheries (FAFF) to Poitete Campus with the intention to rehabilitate Poitete Campus to offer the forestry programs close to the Kolobangara Forest Plantation Limited.

In 2021, the University through the Faculty of Agriculture, Forestry and Fisheries, with the support of the FAO office and leaders Raushan and Douglas Yee, prepared a proposal to rehabilitate the Poitete campus. This proposal garnered approval from the Indian government in early 2022, following its submission through the High Commission Office in Port Moresby. The process to secure the funding commenced in July 2022, with a visit from the Indian High Commissioner and his team to SINU.

## ***2.2.Objectives of the Visit***

- Subdivision and seeking land extension over the SINU Poitete Campus land boundary.
- Seek approval from KFPL over the proposed trade-off of Ministry of Agriculture and Livestock land located at Ringgi Cove in Kolobangara Island.
- Seek approval from KFPL for the proposed practicum opportunity for students doing programs like Nursing, Trades, and Teaching in KFPL's facilities.
- Other Items

## ***2.3.Scope of the report***

### **2.3.1. Meetings and Discussions:**

- Hold meetings with KFPL General Manager, the Board of Management, and relevant SINU representatives to discuss the agenda items and seek necessary approvals.

### **2.3.2. Site Visits:**

- Conduct site visits to Poitete Campus and Ringgi Cove to assess the land boundaries, proposed extension areas, and the location for the new signboard.

### **2.3.3. Document Review:**

- Review and verify documents related to land titles, subdivision plans, and development plans to ensure compliance with the Land and Title Act and to facilitate decision-making.

### **2.3.4. Collaboration Enhancement:**

- Discuss and outline steps to strengthen the ongoing collaboration under the MOU, focusing on enhancing educational opportunities and practicum experiences for SINU students.



### 3. TRIP ITINERARY

#### 3.1. *Dates and Locations Visited*

11 June 2024



1. Site Visit around Poitete SINU Campus Boundary inclusive of Ministry of Forestry Site Boundary.

2. SINU Delegated Staff travel to Ringi Cove Station to Meet with General Manager KFPL, HR Manager and KFPLF member.

#### 3.2. *Key Meetings and Activities*

3.2.1. Orientation Meeting between KFPL Senior Staff and SINU Forestry Practicum Students and their staff with SINU delegated Staff



- All introduce themselves and their roles
- KFPL Human Resources Manager, Mr. Tim Bula outlines the background of KFPL company and MOU rationale that mandates KFPL to Support SINU Forestry Students Industry Learning, work performance requirements including OSH, Ethics, job descriptions and hours of work structure.
- Supervisors of each sector of the KFPL operations introduce themselves and established contacts.
- After the meeting a photo session took place.

3.2.2. Meeting with KFPL Manager, Human Resources Manager and KLTF Member.

- SINU Delegated staff team was led by Edward Biku.
- The agendas are as per the objectives above.
- The resolutions are per the meeting summary below.



3.3. *Names and titles of persons met*

- Mr Edwin Schramm, General Manager KFPL.
- Mr Tim Bula, Human Resource and Community Relations Manager (KFPL).
- Mr Greg Napthalae, KLTF Member.

---

## 4. LAND NEGOTIATION DETAILS

### 4.1. *Description of the Land in Question*

Location: Poitete on Kolobangara Island 43km from Gizo and 68km from Munda

Size: 1.161 Hectares.

Current use: Accommodation and classrooms for Forestry Students Practicum Sessions.

Parcel: located within FTE parcel number 081-003-106.

### 4.2. *Land Ownership and Title Status*

- The Poitete Campus is located in Fix Term Estate (FTE) 081-003-106 Registered in the name of Kolobangara Forest Plantation Limited (KFPL).
- The Perpetual Estate (PE) was not established at the time of the meeting. However, further investigation will be done with the commissioner of land to identify the holder of the Perpetual Estate (PE). The issue is whether the PE is with the Commissioner of Land or the Kolobangara Land Trust Foundation (KLTF).



---

## 5. MEETINGS SUMMARY

### *5.1.Meeting with KFPL Manager, Human Resources Manager and KLTF Member*

**Date and Time:** 11 June 2024, 3:00 - 4:00 pm

#### **Key Discussion Points:**

1. Subdivision and land extension at SINU Poitete Campus.
2. Trade-off proposal involving Ministry of Agriculture and Livestock land at Ringgi Cove.
3. Practicum opportunities for SINU students at KFPL facilities.
4. Additional collaborative items between SINU and KFPL.

#### **Agreements Reached:**

1. **Subdivision Approval:** KFPL General Manager to seek Board approval for subdivision of 1.161 hectares at Poitete Campus.
2. **Land Extension:** KFPL General Manager to seek Board approval for a 10-hectare extension at Poitete Campus; SINU to provide a development plan.
3. **Land Trade-Off:** SINU to discuss potential land trade with Ministry of Agriculture and Livestock and Western Provincial Government; KFPL has no immediate concerns.
4. **Student Practicum:** Ongoing practicum for SINU students in various programs at KFPL facilities, as per existing MOU.
5. **Collaborative Efforts:** Continued collaboration under MOU to enhance TVET and higher education programs.
6. **Signboard Construction:** KFPL approved SINU to build a signboard at Ringgi Cove.
7. **Document Verification:** SINU and KFPL to verify documents related to FTE and PE for Poitete Campus subdivision approval.
8. **Forestry Land Acquisition:** SINU to liaise with Ministry of Forestry and Research regarding potential acquisition of adjacent forestry land.

#### **Action Items and Responsibilities:**

1. **KFPL General Manager:** Seek Board approval for land subdivision and extension.
2. **SINU:** Provide development plan for Poitete Campus, discuss land trade with relevant authorities, and liaise with Ministry of Forestry for land acquisition.
3. **KFPL and SINU:** Verify documents for Poitete Campus subdivision approval.
4. **SINU:** Build signboard at Ringgi Cove as agreed with KFPL.

**Meeting End:** 4:00 pm

---

## 6. KEY FINDINGS

### 6.1. *Ownership of PE and FTE Land Title Holder for Parcel 081-003-106*

- Poitete Campus 1.161 hectares is located in Fix Term Estate 081-003-106 registered in the name of Kolobangara Forest Plantation Limited (KFPL).
- The Perpetual Estate was not determine in the meeting but shall be confirm with the Commissioner of land to determine the holder of the PE.
- Edwin Schramm KFPL General Manager shall raise the matter of subdivision of 1.161 hectares to the KFPL board of management in consultation with the PE holder and the Commissioner of Lands.
- KFPL and board of management shall consider SINU offer for 10 hectares of land for further expansion of 1.161 hectares of land boundary upon SINU submission of Poitete Development Plan.

### 6.2. *Legal Considerations and Potential Issues*

- Regulatory Compliance: Ensuring that all actions taken shall comply with the requirement provided by the Land and Title Act.
- Clear Communication: Maintaining clear and transparent communication among all stakeholders to avoid misunderstandings and ensure mutual agreement on key issues.
- Long-Term Impact: Considering the long-term implications of land subdivisions, extensions, and acquisitions on the community, environment, and educational outcomes.

### 6.3. *Assessment of Negotiation Climate and Readiness*

- The KFPL General Manager was waiting for the meeting a day before as per previous arrangement but was not possible but then accepted a reviewed meeting scheduled on 11-06-24 3pm.
- During the meeting, the atmosphere was very cordial and calm, the GM of KPFL was very receptive and wanting to know more about the type of development that SINU wishes to undertake to justify expansion of current Poitete campus land area. He also provide important advice on having own logistic resources to be efficient.
- In his talk Mr. Edwin Schramm said that he is excited to see SINU rejuvenating Poitete campus and looking forward for further discussions once land title matters become clearer.



## 7. RECOMMENDATIONS

Area	Proposed Next Steps	Strategies for Addressing Issues	Timeline for Follow-Up Actions	Potential Risks and Mitigation Strategies
<b>Subdivision Approval</b>	<ul style="list-style-type: none"> <li>- KFPL GM to present request to Board.</li> <li>- SINU to submit development plan for Poitete Campus.</li> </ul>	<ul style="list-style-type: none"> <li>- Ensure compliance with requirement provided in land and Title Act.</li> <li>- Collaborate with legal experts for documentation.</li> </ul>	<ul style="list-style-type: none"> <li>- Within 1 month: Present request and submit development plan.</li> </ul>	<b>Approval Delays</b> <i>Mitigation:</i> Regular communication with Board, provide detailed documentation.
<b>Land Extension</b>	<ul style="list-style-type: none"> <li>- KFPL GM to seek Board approval for 10-hectare extension.</li> <li>- SINU to provide detailed development plan of Poitete Campus.</li> </ul>	<ul style="list-style-type: none"> <li>- Ensure boundary extension complies with the Land and Title Act.</li> <li>- Provide detailed development plan of Poitete Campus.</li> </ul>	<ul style="list-style-type: none"> <li>- Within 1 month: Present request and submit development plan of Poitete Campus.</li> </ul>	<b>Compliance Issues</b> <i>Mitigation:</i> Engage legal experts, conduct thorough verification.
<b>Land Trade-Off</b>	<ul style="list-style-type: none"> <li>- SINU to discuss with Ministry of Agriculture, Livestock, and Western Provincial Government.</li> </ul>	<ul style="list-style-type: none"> <li>- Maintain transparent communication with stakeholders.</li> </ul>	<ul style="list-style-type: none"> <li>- Within 2-3 months: Initiate discussions.</li> </ul>	<b>Stakeholder Resistance</b> <i>Mitigation:</i> Collaborative discussions, highlight benefits.
<b>Student Practicum</b>	<ul style="list-style-type: none"> <li>- Review MOU to identify areas for expansion.</li> </ul>	<ul style="list-style-type: none"> <li>- Ensure practicum opportunities align with MOU.</li> <li>- Consider expanding MOU scope.</li> </ul>	<ul style="list-style-type: none"> <li>- Ongoing: Regular reviews and updates on MOU.</li> </ul>	<b>Operational Disruptions</b> <i>Mitigation:</i> Develop contingency plans.
<b>Signboard Construction</b>	<ul style="list-style-type: none"> <li>- SINU to plan and construct signboard at Ringgi Cove.</li> </ul>	<ul style="list-style-type: none"> <li>- Ensure compliance with local regulations and zoning laws and KFPL relevant policy.</li> </ul>	<ul style="list-style-type: none"> <li>- Within 3 months: Plan and construct signboard.</li> </ul>	<b>Resource Constraints</b> <i>Mitigation:</i> Prioritize actions, seek additional support if needed.
<b>Document Verification</b>	<ul style="list-style-type: none"> <li>- Joint examination and verification of FTE and PE documents by SINU and KFPL.</li> </ul>	<ul style="list-style-type: none"> <li>- Collaborate with legal experts for thorough verification.</li> </ul>	<ul style="list-style-type: none"> <li>- Within 2-3 months: Joint verification of documents.</li> </ul>	<b>Documentation Issues.</b> <i>Mitigation:</i> Engage legal experts, ensure thorough verification.

<b>Forestry Land Acquisition</b>	- SINU to engage with Ministry of Forestry and Research about potential land acquisition.	- Ensure compliance with forestry and the requirement provided in Land and Title Act over land acquisition.	- Within 6 months: Liaise with Ministry of Forestry and Research.	<b>Regulatory Compliance.</b> Mitigation: Ensure compliance with laws, engage legal experts.
----------------------------------	---	---	---	---



## 8. SUPPORTING DOCUMENTS

### 8.1. *Meeting Minutes and Notes*



11 June 2024

Venue: KFPL Administration Office

Time: 3 -4 pm

Attendants:

Edward Biku-Executive Officer Legal &Contract (SINU)

Samuel Pitakak Vazu (SP)-Forestry Lecturer (SINU)

Cypriano Nuake –Principle Planning Officer (SINU)

Peter Mahoa-Forestry Lecturer (SINU)

Edwin Schramm-General Manager KFPL.

Tim Bula- Human Resource and Community Relations Manager (KFPL)

Greg Napthalae-KLTF Member

Apology: Dr Vaeno Vigulu-Dean FAFF (SINU)

### **AGENDA:**

Motion for Discussion:

1. Subdivision and seeking land extension over the SINU Paitete Campus land boundary.
2. Seek approval from KFPL over the proposed trade-off of Ministry of Agriculture and Livestock land located at Ringgi Cove in Kolombangara Islands.
3. Seek approval from KFPL for the proposed practicum opportunity for students doing programs like Nursing, Trades, and Teaching in KFPL's facilities.
4. Other Items

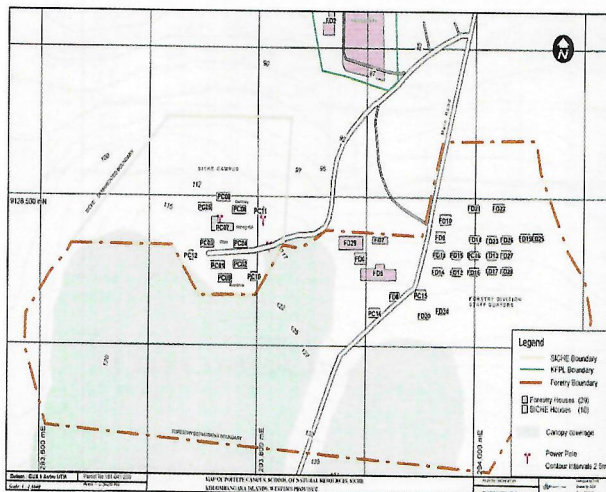
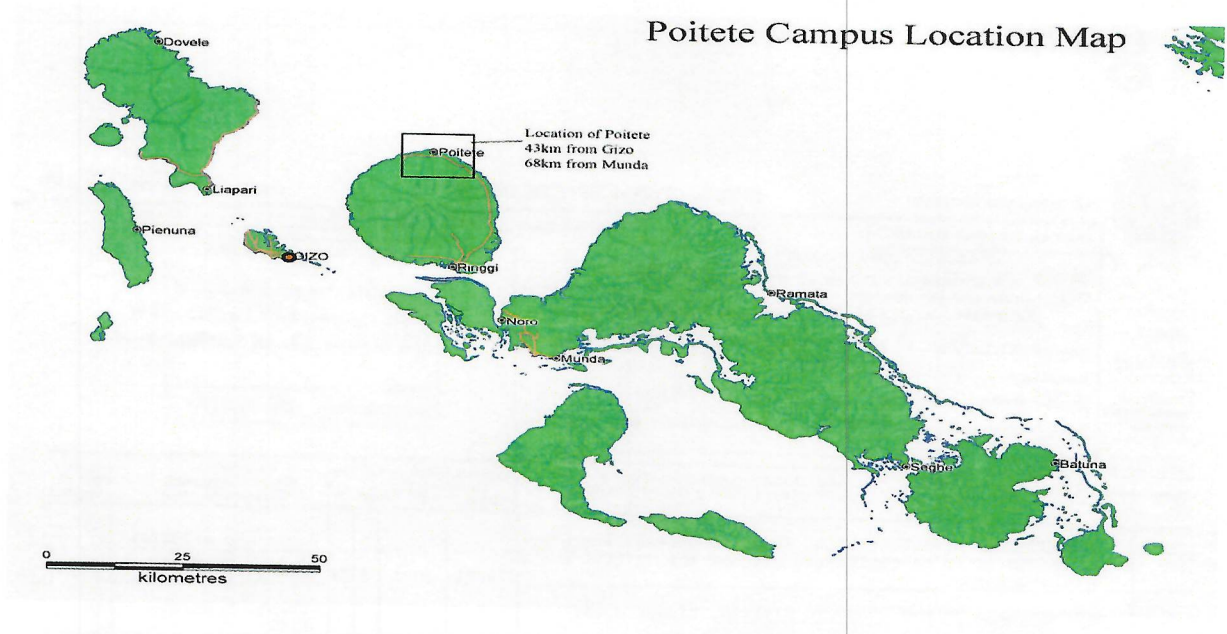
## **RESOLUTION:**

1. As per Agenda 1. Above. It was raised and resolved that KFPL General Manager Edwin Schramm shall discuss and seek approval from the KFPL Board of Management. Once approval is granted, KFPL will proceed with the matter of subdivision with the Commissioner of Land to subdivide the existing 1.161 hectares boundaries under the requirements stipulated in the Land and Title Act.
2. As per Agenda 1. Above. It was raised and resolved that KFPL General Manager Edwin Schramm shall discuss and seek approval from the KFPL Board of Management for SINU's request for a 10-10-hectare extension of the Poitete SINU Campus boundary. In consequent, SINU shall provide the development plan of Poitete Campus to help them to make decision over the propose request for boundary extension.
3. As per Agenda 2. Above. It was raised and resolved that SINU shall discuss with the Ministry of Agriculture and Livestock and the Western Provincial Government (WPG) for the possibility of trade-off of Ringgi Agriculture land over existing SINU land. The KFPL has no issues over this land, however, may be consulted about any possible trade in the future.
4. As per Agenda 3. Above. It was raised and resolved that SINU students' practicum in different programs like Nursing, Trades, and Teaching are normal and ongoing throughout the year according to their schedules and are part of the curriculum or nature of the programs. This is ongoing, and KFPL always welcomes students from SINU as far as the MOU is concerned and may consider other areas which fall outside the scope of the MOU.
5. As per Agenda 4. Above. It was raised and resolved that SINU and KFPL shall continue to work in collaboration under the MOU to enhance learning in TVET and higher education programs for our students.
6. As per Agenda 4. Above. It was raised and resolved that KFPL General Manager Edwin Schramm and his executive has agreed for SINU to build a signboard at Ringgi Cove.
7. As per Agenda 4. Above. It was raised and resolved that SINU-KFPL shall examine and verify the relevant documents related to the FTE and PE of the lot where Poitete Campus is located for the board to approve and facilitate the subdivision, of the existing 1.161 hectares.
8. As per Agenda 4. Above. It was raised and resolved that SINU shall liaise with the Ministry of Forestry and Research if there is any possibility for SINU to acquire the forestry land at Poitete- a shared boundary with SINU Poitete Campus

**Meeting End at 4 Pm.**



## 8.2. Maps and Land Descriptions



Google Earth Map over Poitete Campus

### 8.3. Land Title

**HONIARA LAND REGISTRY** **FIXED - TERM ESTATE REGISTER** **PARCEL NUMBER** 081-003-106

**PARCEL NUMBER** 081-003-106 **EASEMENTS APPURTENANT ETC.**

**PART A - PROPERTY SECTION**

Edition 2  
 .....  
 Opened 26/9/08  
 Number of pages in this Register 2

Grantor: COMMISSIONER OF LANDS  
 Grantee: KOLOMBANGARA FOREST PRODUCTS LIMITED  
 Term: 75 years From: 1/1/89 Rent: See Schedule  
 Area (approx.): 5215.13 ha. Survey/EPD Plan No: TM 92/28  
 Date of Grant: 5th December 1990  
 Mutation Number: .....  
 Superseded Parcels: .....  
 Current Parcel: .....

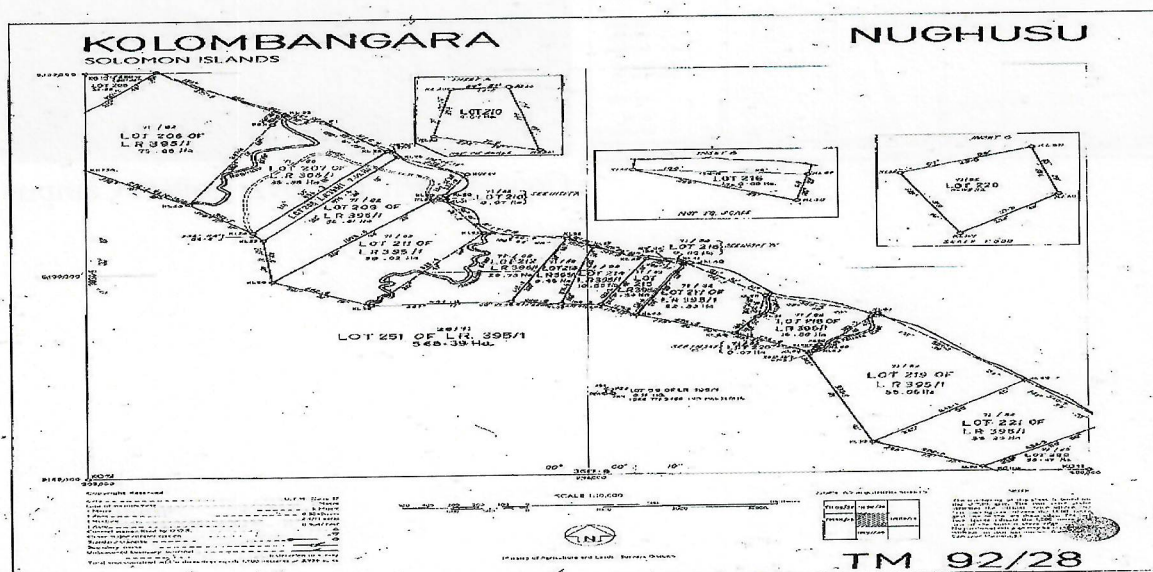
**LAND AND TITLE ACT (5.120)**  
 Certified to be a true copy page 1 of 1  
 Registered PN 081-003-106  
 At 12.00 hour the 12 day of June 2014  
 Honiara  
 Solomon Islands Registrar of Titles

**PART B - OWNERSHIP SECTION**

Entry No.	Name, Description and Address of Owner and Restrictions affecting Right of Disposition	Application Number and Date of Presentation	Y	M	D	Observations (Nature of Instrument, Consideration, etc.)	Signature of Registrar
1.	RESTRICTION: no subdivision, lease, sublease, transfer or charge is to be registered without the written consent of the Grantor.	275/91	1991	3	21	Grant and s.132(3) of L. & T. Act, (Cap 133).	
2.	KOLOMBANGARA FOREST PRODUCTS LIMITED, Ringgi Cove, Kolombangara Island, Western Province.					Grant. Premium: Nil.	
3.	RESTRICTION: no subdivision, lease, transfer, surrender or charge is to be registered without the written consent of the owner of the charge registered at Entry 2 in Part C.	754/07	2007	8	23	Charge and s.168(1) (d) and s.169 of L. & T. Act, (Cap 133).	
4.	RESTRICTION: no subdivision, lease, transfer, surrender or charge is to be registered without the written consent of the owner of the charge registered at Entry 3 in Part C.	453/08	2008	4	17	Charge and s.168(1) (d) and s.169 of L. & T. Act, (Cap 133).	
5.	CHARGE: by Treasury Timber Limited, P.O. Box 091, Honiara	1195/15	2015	9	15	See Application	
6.	CHARGE: by Frank Dick, C/- P.O. Box 1273, Honiara.	738/15	2015	6	3	See Application.	

LANDS 65 ANY ENTRIES STRUCK THROUGH IN RED ARE NO LONGER SUBSISTING

### 8.4. Legal Documents and Agreements

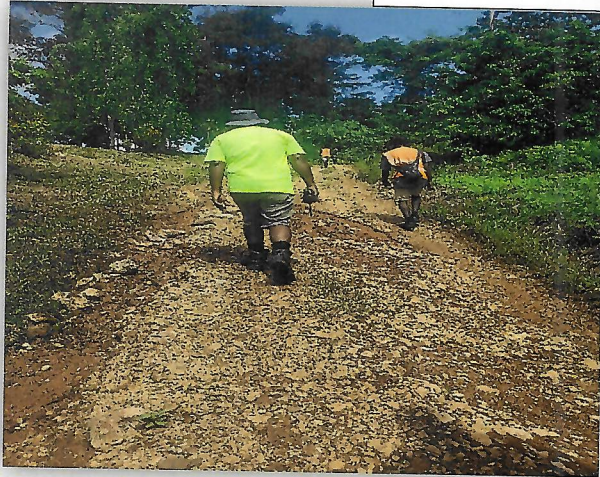


Within FTE 081-003-106 is Lot 134, Lot 251 and Lot 253 of LR 395/1 identified in the map above.



## 8.5. Photographs of Site Visits

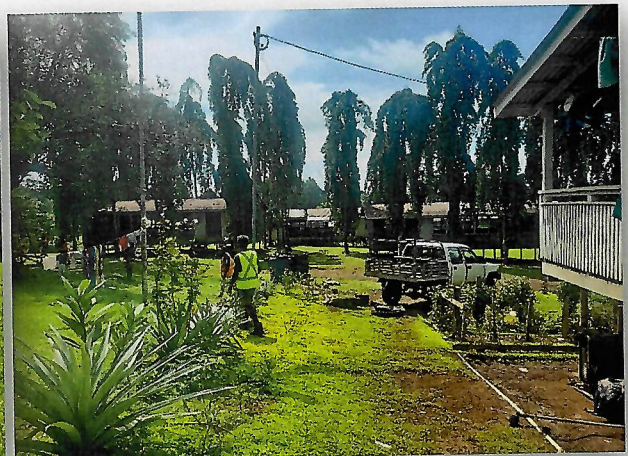
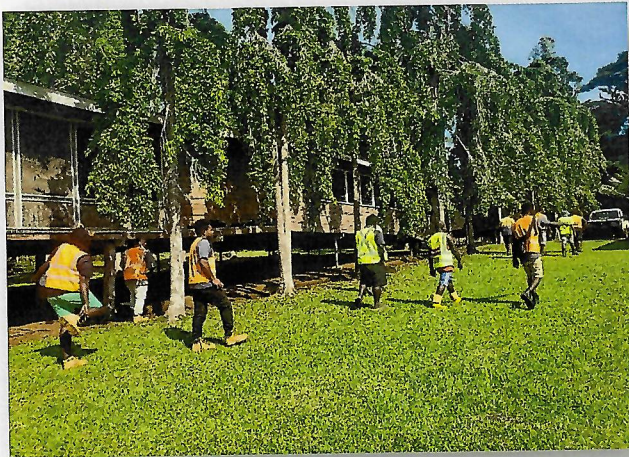
Poitete SINU Campus Boundary Visit



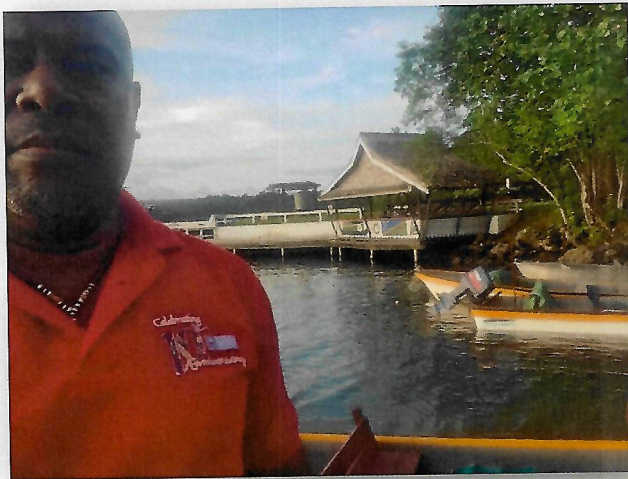
Ministry of Forestry Old office







Ringi Cove Wharf Site Visit for SINU Signboard Erection





---

## 9. CONCLUSION

### *9.1. Recap of the Visit's Significance*

The visit proved to be highly significant, providing a real visual understanding of the site and facilitating meetings with key stakeholders on the ground. It offered in-depth experience and a sense of the logistics, traditions, and practices of the area. Important contacts were established for future communication and collaboration regarding SINU business. The firsthand information obtained on the ground situation, especially concerning the SINU Poitete campus location and land boundary, was invaluable. Additionally, the visit helped identify other crucial issues that had been overlooked during the planning stages and offered a greater understanding of the challenges related to the SINU Poitete land acquisition.

### *9.2. Expression of Gratitude to Participants and Stakeholders*

Special thanks to Mr. Samuel Pitakaka for his invaluable experience and historical background, having resided in Poitete 18 years ago. His insights into the establishment and development of the SINU Poitete campus over the years were immensely helpful.

We are thankful for Dr. Vaeno Vigulu, Dean of FAFF for the providing background information about the Poitete Site and KFPL and land owners association peceptions and organization during the meetings leading up to the visit.

We are also grateful to Mr. Edward Biku for his expertise in legal matters, which was crucial in guiding the team through the complexities of land negotiations within the legal framework. Mr. Tim Bula, with his extensive experience in human resources and public relations, provided valuable insights into the company's requirements and expectations, sharing the company's perspectives and vision.

Our sincere appreciation goes to the KFPL General Manager, Mr. Edwin Schramm, for his exceptional leadership, guidance, and advice on the way forward for SINU's advancement. We also thank Mr. Napthelae for representing the landowners' perspective and supporting SINU's development initiatives.

A special note of thanks to Mr. Peter Mahoa for managing all the logistics and providing a detailed background of the Poitete SINU campus establishments. His leadership in

revamping the MOU between SINU and KFPL for Forestry students' practicum sessions has been invaluable.


All their contributions have been instrumental in making this visit a success.

**Report compiled by the Solomon Islands National University Delegate  
Representatives;**

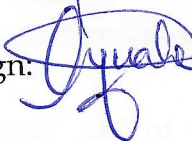
Mr. Edward Biku – SINU Legal counsel

Sign:  Date: 21/06/2024

Mr. Sammuel Pitakaka- Lecturer Forestry

Sign:  Date: 21/06/2024

Mr. Cypriano Nuake – Principal Planning Officer- IPD

Sign:  Date: 21/06/2024



---

## **10. APPENDICES**

### ***10.1. Detailed Itinerary***

#### **Monday, June 10, 2024**

**3:00 PM:** Depart Henderson Honiara on flight to Munda.

**4:00 PM:** Arrive at Munda.

**4:15 PM:** Take a bus from Munda to Noro.

**5:00 PM:** Board an OBM (Outboard Motor Boat) at Noro and depart for Ringi Cove.

**6:00 PM:** Arrive at Ringi Cove and board a land crusher vehicle.

**6:15 PM:** Depart Ringi Cove for Poitete, a 40 km ride.

**7:00 PM:** Arrive at Poitete.

#### **Tuesday, June 11, 2024**

**9:30 AM:** SINU Dip Students and SINU Delegates gather in the Poitete common Room for the orientation session.

- **9:35 AM:** KFPL HR welcomes everyone and gives a company background and work requirements briefing.
- **10:00 AM:** Supervisors introduce their areas of focus.

**11:00 AM:** SINU delegate site visit of the SINU Poitete campus boundary.

**1:00 PM:** End of site visit.

**1:30 PM:** SINU Delegates board a land crusher vehicle and depart for Ringi Cove.

**3:00 PM:** Arrive at Ringi Cove and start meeting with KFPL GM Mr. Edwin Schramm.

**4:00 PM:** Finish Meeting and board the land crusher vehicle to return to Poitete.

**5:30 PM:** Arrive at Poitete.

**Wednesday, June 12, 2024**

**7:30AM:** SINU delegate departs  
for Gizo via OBM from Poitete.



### ***10.2. Contact Information for Key Stakeholders***

Mr. Edwin Schramm – General Manager, KFPL. Contact \_\_\_\_\_

Mr. Tim Bula – Human Resources Manager, KFPL. Contact: \_\_\_\_\_

Mr. Naphtalae – Operations Manager, KFPL and Representative of KLTF-  
Contact: \_\_\_\_\_

### ***10.3. Additional Relevant Information/Issues to be resolved***

Currently Fred Dola is looking after the Poitete Campus very well. The Campus is clean with clover grasses all over. With the help of his wife the campus is clean and beautiful. We suggest that SINU employed his wife to be the cleaner for the University at Poitete Campus. In same, in our recent meeting with KFPL we seek 10 hectares of extension of Poitete Land Boundary. The KFLP team therefore request if SINU can provide connectivity with the Poitete Groundsman Mr Fred Dola to SINU emails connectivity to stay updated of SINU plan and provide computer for internet and email access in turn will strengthen communication and reporting with the director Property and Facilities.

