

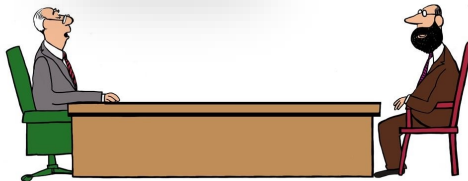
GUIDELINES

After each class

- 1** Leave the classroom as it is. Do not remain behind as the room will probably be occupied by another group.



- 2** Remember to again wash your hands with soap and water after each class.



- 3** Social distancing should also be practiced in the staff and administration offices. Therefore, students are expected to come as individuals and not in groups to consult or seek help from their lecturers/tutors.

What to do if you think you have COVID-19

The **SIGNS & SYMPTOMS** of **COVID-19** include:

- Fever
- Coughing
- Sneezing
- Shortness of breath

If you think you have any of these symptoms, please **DO NOT COME TO CLASS**-stay at home. If the symptoms are becoming worse and you think you need to get tested for COVID-19, CALL **115** or **25256**. Do not go directly to the clinic or hospital!

For more information visit www.solomons.gov.sb or call the 23650 OR 7522202.

Corona-related information at the Solomon Islands National University can be obtained from the office of the Dean of FNMHS.

- ◆ Phone: (677) 42600
- ◆ Email: dean.fnmhs@sinu.edu.sb

This leaflet is produced by:

The School of Public Health, FNMHS, Solomon Islands National University IN ASSOCIATION with the Ministry of Health & Medical Services.



No liability Clause: By accepting to work or study at the Solomon Islands National University (SINU), you do agree that SINU shall not be liable for any incidents where a staff or student contracts COVID-19. This means that the University shall not be liable for any acts of negligence on the part of a staff and student, should he/she contracts COVID-19. The University shall not be also liable for the duty of care if a staff/student consequently succumbs to COVID-19 and have been confirmed to have breached the guidelines stipulated in this leaflet.



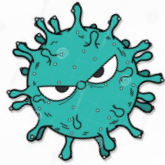
COVID-19 INFORMATION SHEET FOR SINU STUDENTS



IMPORTANT COVID-19 GUIDELINES FOR STUDENTS

QUICK FACTS

What is coronavirus?



Coronavirus (COVID-19) is a large family of viruses known to cause illness, ranging from the common cold to more severe diseases. COVID-19 is a new strain of coronavirus that is affecting humans.

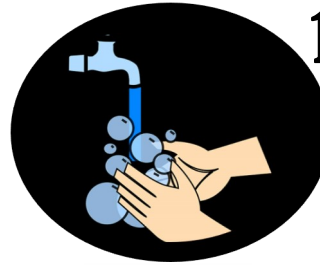
How does it spread?

- Close contact with another person who has the virus.
- Fluid droplets from sneezing or coughing.
- Exposure to surfaces and or items that have been sneezed or coughed upon by infected individuals.



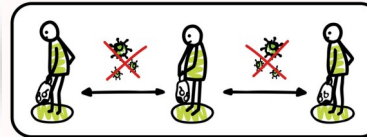
GUIDELINES

Before entering the classroom



1 Wash your hands with **soap** and **water** before entering the classroom.

2



Members of a class should practice social distancing of **1.5 meters** when entering or leaving a classroom.



3 Chewing and spitting of betel nut is strictly **prohibited** on all SINU campuses.

4

Always cover your mouth while coughing and sneezing. The best way to do that is to cough or sneeze into a bent elbow.



5

Don't shake hands or share hugs.

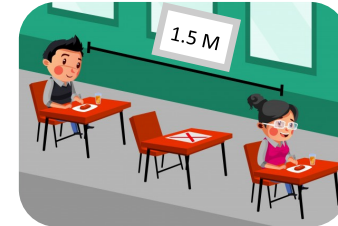


GUIDELINES

Inside the classroom

1

Remain **1.5** or **MORE** meters from each other by sitting in the designated areas separated by the **RED** tapes. Please avoid unnecessary movements around the classroom unless you are told to do so by your lecturer/tutor.



2

DON'T cough or sneeze

openly while you're in the classroom. Always cover your mouth when you want to do so. The best way to do that is to cough or sneeze into a bent elbow. If you're having trouble with this, kindly ask permission to leave the classroom.



3



To practice social distancing, do not ask the lecturer/tutor to load soft copies of their notes onto your USBs/flash drives. Depending on your lecturers/tutors, arrangements will be made to enable you to access the notes online-that is through **Moodle** or your **private emails**.